



LISTING INFORMATION OF
**8200076 Canada Inc - Magnesium sulfate boards, Model
MgSO4**
SPEC ID: 52152

WFI Panels
5500 Macdonald #105
Cote St-Luc, QC H3X 2W5
Canada

This report is for the exclusive use of Intertek's Client and is provided pursuant to the agreement between Intertek and its Client. Intertek's responsibility and liability are limited to the terms and conditions of the agreement. Intertek assumes no liability to any party, other than to the Client in accordance with the agreement, for any loss, expense or damage occasioned by the use of this report. Only the Client is authorized to permit copying or distribution of this report and then only in its entirety. Any use of the Intertek name or one of its marks for the sale or advertisement of the tested material, product or service must first be approved in writing by Intertek. The observations and test results in this report are relevant only to the sample tested. This report by itself does not imply that the material, product, or service is or has ever been under an Intertek certification program.

LISTING INFORMATION

The product is named as "Magnesium sulphate boards" by the applicant with Model No. MgSO₄ (Brand name: WFI PANELS). It is a glass fiber reinforced flat magnesium sulphate cement board with a nominal size of 10ft. long by 4ft. wide by 12mm thick.

FIRE RATINGS

Test Standard	Rating	Design Number
ASTM E119 and CAN/ULC S101	One Hour non-Loadbearing	8CI/GFRCP 60-01

FLAME SPREAD RATING

Test Standard	Flame Spread	Smoke Development
CAN/ULC S102	Flame Spread Rating = 0	Smoke Developed Classification = 0

Attribute	Value
Classification - Flame Spread Index	0
Classification - Smoke Developed Index	0
Criteria	CAN / ULC S101 (2014)
Criteria	CAN / ULC S102 (2018)
Criteria	ASTM E119 (2018c)
CSI Code	07 44 53 Glass-Fiber-Reinforced Cementitious Panels
Intertek Services	Certification
Listed or Inspected	LISTED
Listing Section	BUILDING PANELS
Spec ID	52152

DRAWING INDEX

Design No. 8CI/GFRCP 60-01

DESIGN NO. 8CI/GFRCP 60-01



Division 07 – Thermal and Moisture Protection
07 44 00 Faced Panels
07 44 53 Glass-Fiber-Reinforced Cementitious Panels

8200076 Canada Inc.
Design No. 8CI/GFRCP 60-01
Magnesium Sulfate Boards
Non-Loadbearing Wall Assembly
ATSM E119 and CAN/ULC S101
Rating: 1 Hour

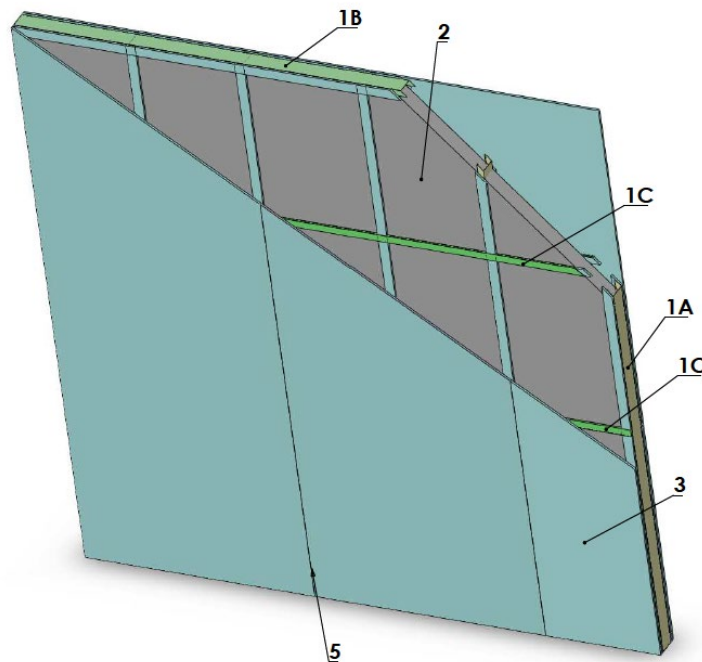


Fig. 1 Wall Assembly Drawing

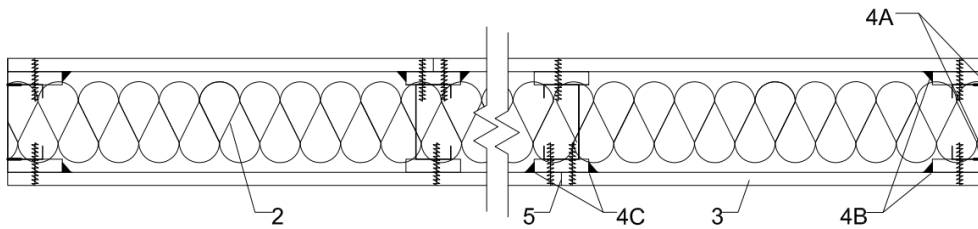


Fig. 2 Horizontal Section of the Wall Assembly

Date Issued: November 7, 2019

Page 1 of 2

Project No. 190411006SHF

Version: 02 August 2017

SFT-BC-OP-19I

DESIGN NO. 8CI/GFRCP 60-01 (2 OF 2)

Division 07 – Thermal and Moisture Protection
 07 44 00 Faced Panels
 07 42 53 Glass-Fiber-Reinforced Cementitious Panels

1. STEEL FRAMING:

- A. C-STEEL STUDS FRAMING – Use 92mm x 32mm (t=1.13mm) galvanized C-steel studs framing and space studs 610mm on center (oc).
- B. U-STEEL TRACK – Secure the C-steel studs (Item 1A) to top and bottom 94mm x 32mm (t=1.13mm) galvanized U-steel tracks with #6 x 1-5/8 in. self-drilling screws.
- C. GALVANIZED STEEL FURRING BARS – Reinforce the framing with two 11mm x 38mm (t=1.73mm) galvanized steel furring bars starting at a height of 1250mm and then 900mm oc thereafter on both sides.

- 2. INSULATION:** Fully fill the cavity between the magnesium sulfate boards (Item 3) with noncombustible (per ASTM E136) mineral wool insulation with a density of not less than 48 kg/m³.

- 3. CERTIFIED MANUFACTURER:** 8200076 Canada Inc.

CERTIFIED PRODUCT: Magnesium Sulfate Boards, 12mm thick

CERTIFIED MODEL: MgSO₄

Insert 34mm wide magnesium sulphate strip into galvanized steel furring bars (item 1C) U slot and cover the framing members (item 1A and 1B) with 50mm wide magnesium sulphate strips. Fasten one layer of magnesium sulphate board vertically to the framing on both sides using #6 x 1-5/8 in. screws spaced 150mm around the perimeter and 200mm in the field.

- 4. GAP SEALANT:** Apply approximately 9mm wide HILTI CP606 Firestop acrylic sealant bead into:

- A. Gaps between perimeter magnesium sulfate strips and steel framing.
- B. Corners between perimeter magnesium sulfate strips and magnesium sulfate boards.
- C. Corners between vertical magnesium sulfate strips and magnesium sulfate boards close to the board joints.

- 5. JOINT AND SCREW HEADS:** Cover the joints between the magnesium sulfate boards (Item 3) with Fibatape joint tape and finish joints with Easi-Fil All Purpose Drywall Compound Sealant. Finish screw heads with HILTI CP606 Firestop acrylic sealant.